



# **2019 / 2020**

## **Industrial Supports Catalog**

[barkersupportsystems.com](http://barkersupportsystems.com)

Utility Patent Application for “Tray Benders” – Application 16010394 – Filed 06-15-2018 – still pending with USPTO. (TUP41142)

Utility Patent Application for “Multi- Orientable Strut Channel Support System” – Application 15656233 – Filed 07-21-2017 – Approved Patent Number 10167888. (TUP36025)

Child Utility Patent Application for “Multi-Orientable Strut Channel Support System” – Approved 16198151 – Filed 11-21-2018 – Approved Patent Number 10302113. (TUP46514)

2<sup>nd</sup> Child Utility Patent Application for “Multi Orientable Strut Channel Support System” – Application 16404529 – Filed 05-06-2019 – Recently Approved and in process of printing patent from USPTO. (TUP50175)

Design Patent Application for “Narrow Strut Bracket” – Application 29693334 – Filed 05-31-2019 – still pending with USPTO (TDP502027).

2<sup>nd</sup> Design Patent Application for “Wide Strut Bracket” – Application 29693336 – Filed 05-31-2019 – still pending with USPTO (TDP50500).

3<sup>rd</sup> Design Patent Application for “Angular Strut Bracket” – Application 29693337 – Filed 05-31-2019 – still pending with USPTO (TDP50501).

Design Patent Application for “Conduit Clamp Guide” – Application 29614050 – Filed 08-15-2017 – Recently Approved and in process of printing patent from USPTO 02-05-2020. (TDP37386)

Protected by US Copyright Number 0JY6-8DBW-MRUP-QJZN Copyright 2020 Barker Support Systems, All Rights Reserved.

THIRD PARTY CUSTOM LOAD TESTING PERFORMED BY METALLURGICAL  
ENGINEERING SERVICES, INC. 845 E. ARAPAHO ROAD RICHARDSON, TEXAS  
75081

3826 AIRHART ROAD LAKE CHARLES, LA 70605  
310-347-9076 – 276-880-4759  
thebarkerbracket@gmail.com

VISIT US ON THE WEB AT [WWW.BARKERSUPPORTSYSTEMS.COM](http://WWW.BARKERSUPPORTSYSTEMS.COM)



# **ELECTRICAL AND INSTRUMENTATION SUPPORT SYSTEMS**

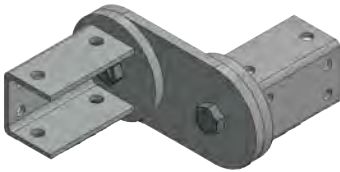


## **TABLE OF CONTENTS**

**PAGES 1-2** Single Rotating Bracket Component; Single Rotating Bracket 2 Bolt Application



**PAGES 3-4** Single Rotating Bracket Kit; Single Rotating Bracket Kit 2 Bolt Application



**PAGES 5-6** Single Offset Plate; Single Offset Bracket Kit; Double Offset Plate; Double Offset Bracket Kit;

**PAGES 7-8** 45 Degree Bracket; 90 Degree Bracket Kit

**PAGES 9-10** Square Bracket Bracket;

**PAGES 11-12** Double Rotating Bracket Kit; Universal Tray Clamp

**PAGES 13-14** Single Unistrut Beam Clamp; Double Strut Beam Clamp; Tube Bundle Benders

**PAGES 15-16** Tubing Tray Benders; Cord Management Bracket

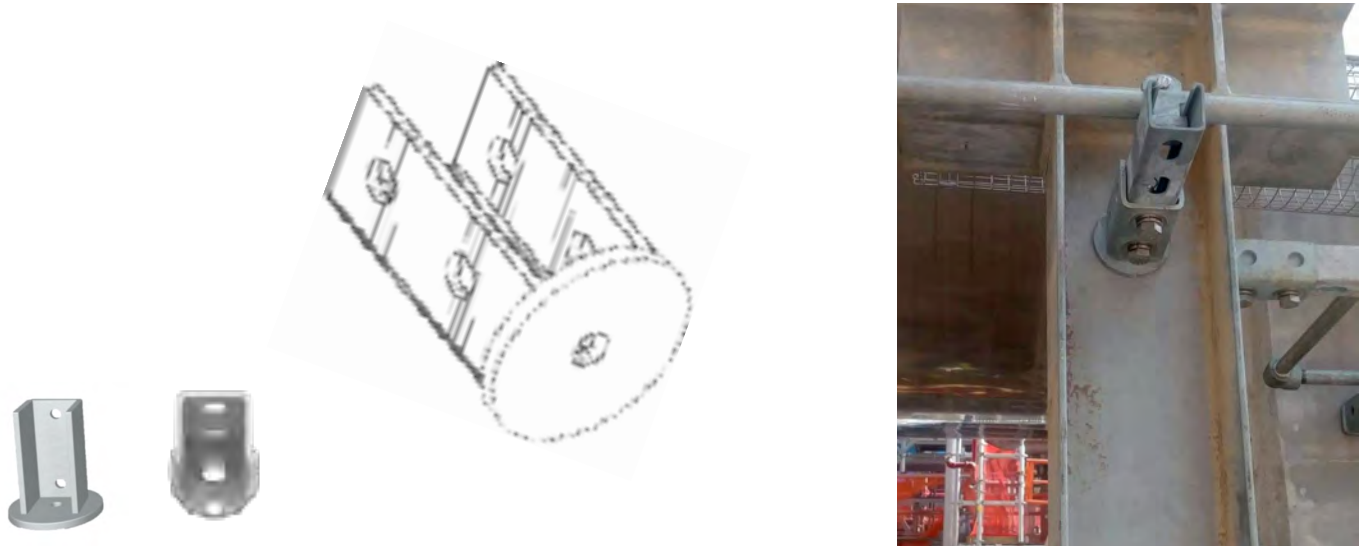
**PAGES 17-18** Floor Mount Instrument Stands; Wall Mount Stands

**PAGES 19 - 21** Product Index

**PAGES 22 - 23** Cost Savings Example; About Us



## Single Rotating Bracket Component / Supports



### Single Rotating Bracket / 01RBA17SSHGDG

### Single Rotating Bracket Two Bolt Application - 0114RBA17SSHGDG

#### PRODUCT SPECIFICATIONS

Material	Hot Dipped Galvanized ASTM A123; Stainless Steel 316
Product Dimensions	Weight 1 lb 8oz; 4 1/2" x 2 7/8", Thickness 1/4", Hole Diameter - Base 33/64" Sides 9/16"; Fits 1 5/8" x 1 5/8" Channel
Load Limits	Vertical Load Limits - 4,500lbs; Horizontal Load- 4,500lbs, Tensile Load - 4,000lbs, Seismic Load Limit - 4,000lbs; Safety Factor 4:1;ANSI- N45.2/NFPA 70-NEC Article 384
Material Required For Installation	304 or 316 Stainless Steel Hex Head Bolt 1/2" diameter, 1 1/4" length, ASME B18.2.1;

**For the installation of Single Unistrut directly to Beam, Concrete, Grating or Column. Rotates 360 Degrees. Mount Bracket before inserting Unistrut for easier installation. No welding required.**

#### Designed To Increase Productivity

Simple Fast Easy Installation  
No Additional Permits Needed  
Eliminates the Use of Excess Material

#### A Safe Alternative To Welded Supports

OSHA Statistics State That 65% of Job Site Injuries Stem From Welding and Grinding.

#### More Cost Effective

Can Be Installed With Minimum Manpower, Without The Additional Cost of Extra Consumables (grinding discs, welding rods, leads, welding blinds, Face Shields etc)

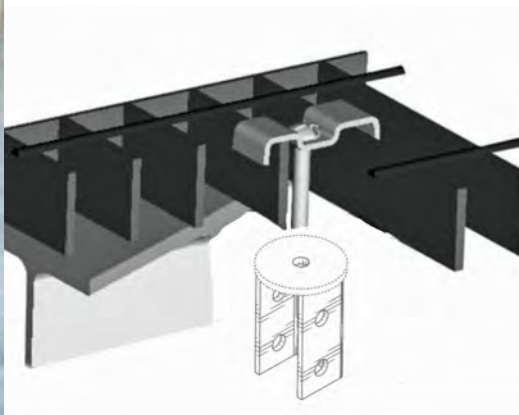
**Our Supports Are Made In America With High Quality U.S Steel and Have Been Engineered and Third Party Tested To Ensure That Our Customers Receive The Very Best. Save Money and Make Your Job site Safer With Our Patented New Technology.**



## Single Rotating Bracket Component / Supports

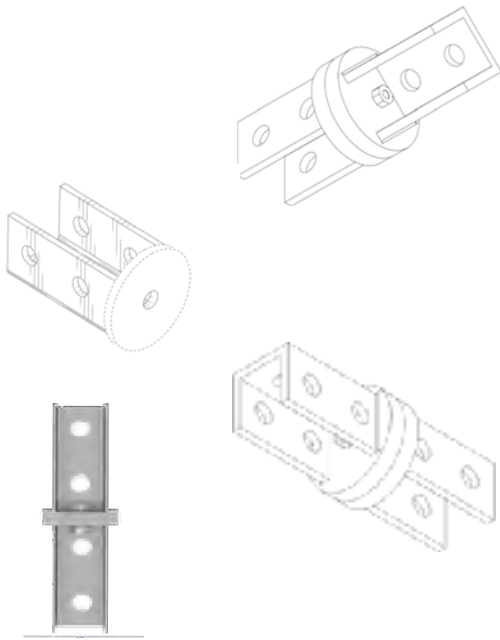


## APPLICATIONS



GRATING BOLT APPLICATION

## Single Rotating Bracket Kit / Supports



### Single Rotating Bracket Kit / 02RBC17SSHDG Single Rotating Bracket Two Bolt Application - 0214RBC17SSHDG

#### PRODUCT SPECIFICATIONS

Material	Hot Dipped Galvanized ASTM A123; Stainless Steel 316
Product Dimensions	Weight 1 lb 8oz; 4 1/2" x 2 7/8", Thickness 1/4", Hole Diameter - Base 33/64" Sides 9/16"; Fits 1 5/8" x 1 5/8" Channel
Load Limits	Vertical Load Limits - 4,500lbs; Horizontal Load- 4,500lbs, Tensile Load - 4,000lbs, Seismic Load Limit - 4,000lbs; Safety Factor 4:1;ANSI- N45.2/NFPA 70-NEC Article 384
Material Required For Installation	(2) 304 or 316 Stainless Steel Hex Head Bolt 1/2" diameter, 1 1/4" length, ASME B18.2.1; (2) Window Clamps

For use in the installation of unistrut as support for cable tray, tubing tray and small bore pipe. Clamps to any diagonal, horizontal, or vertical structure. Both ends rotate a full 360 degrees. Can be installed at any angle. Utilizes two of the Single Rotating Bracket Components.



**UTILIZES MINIMUM  
MANPOWER AND  
INCREASES  
PRODUCTIVITY**

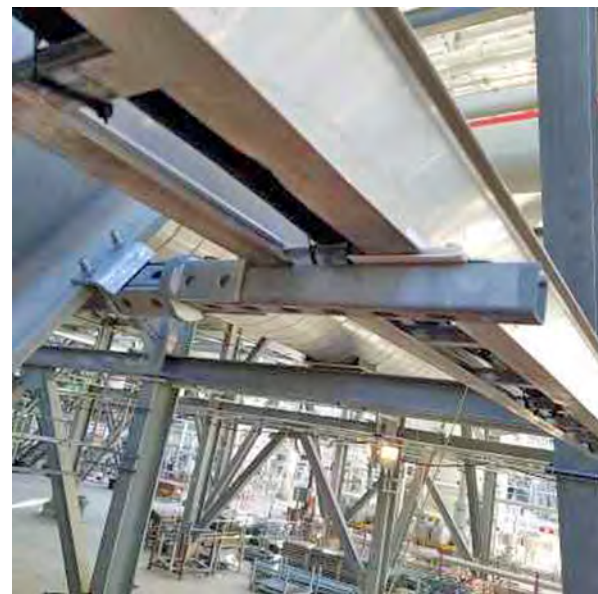
**A SAFER MORE COST EFFECTIVE ALTERNATIVE**



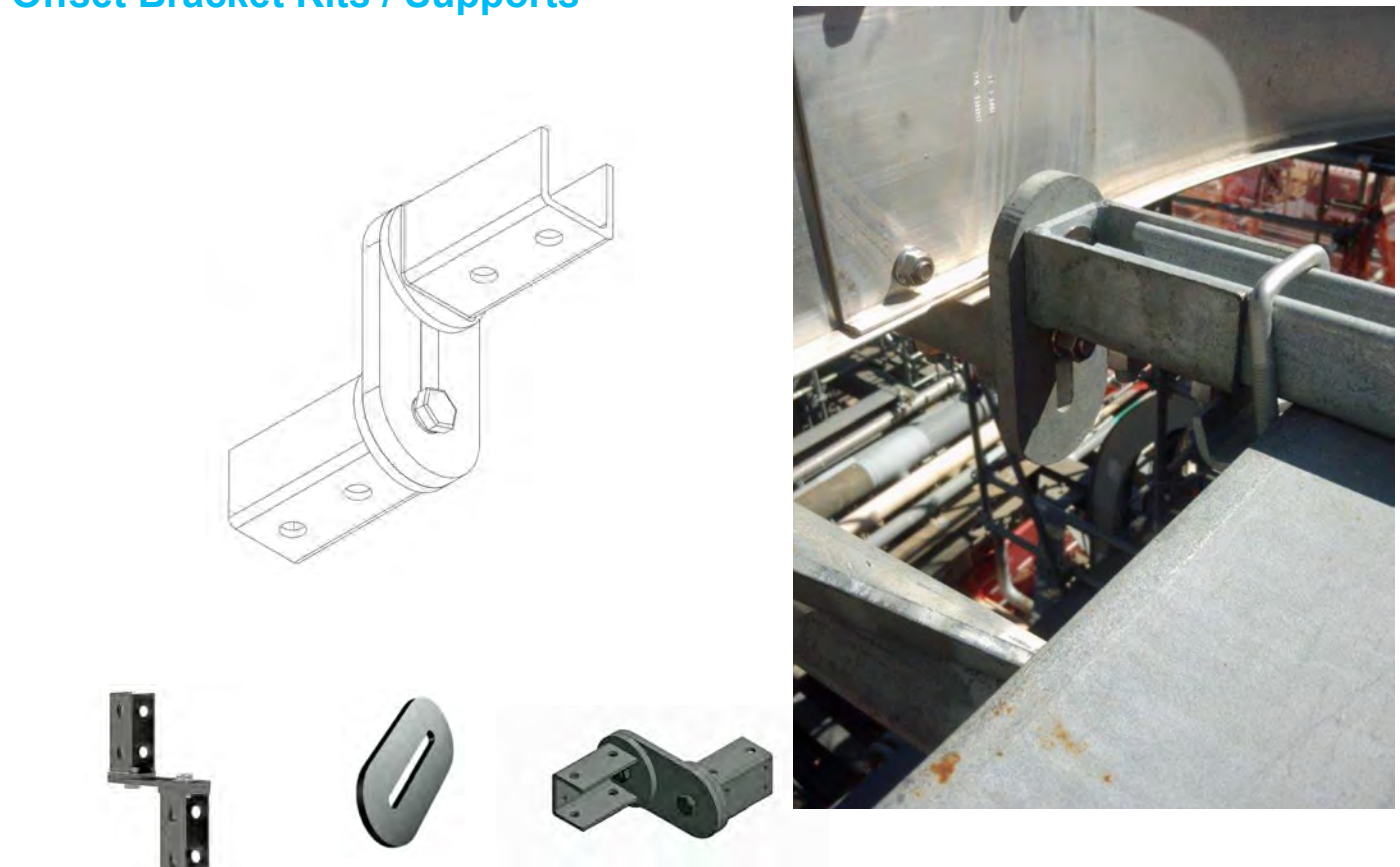
## Single Rotating Bracket Kit / Supports



## *APPLICATIONS*



## Offset Bracket Kits / Supports



Single Offset Bracket Kit / 04OSC17SSHGDG Single Offset Plate / 030S17SSHGDG  
Double Offset Bracket / 08OSC17DSHGDG Double Offset Plate / 07OS17DSHGDG

### PRODUCT SPECIFICATIONS

Material	Hot Dipped Galvanized ASTM A123; Stainless Steel 316
Product Dimensions	Weight 1 lb 8oz; 4 1/2" x 2 7/8", Thickness 1/4", Hole Diameter - Base 33/64" Sides 9/16"; Fits 1 5/8" x 1 5/8" Channel
Load Limits	Vertical Load Limits - 4,500lbs; Horizontal Load- 4,500lbs, Tensile Load - 4,000lbs, Seismic Load Limit - 4,000lbs; Safety Factor 4:1;ANSI- N45.2/NFPA 70-NEC Article 384
Material Required For Installation	(2) 304 or 316 Stainless Steel Hex Head Bolt 1/2" diameter, 1 1/4" length, ASME B18.2.1; (2) Window Clamps

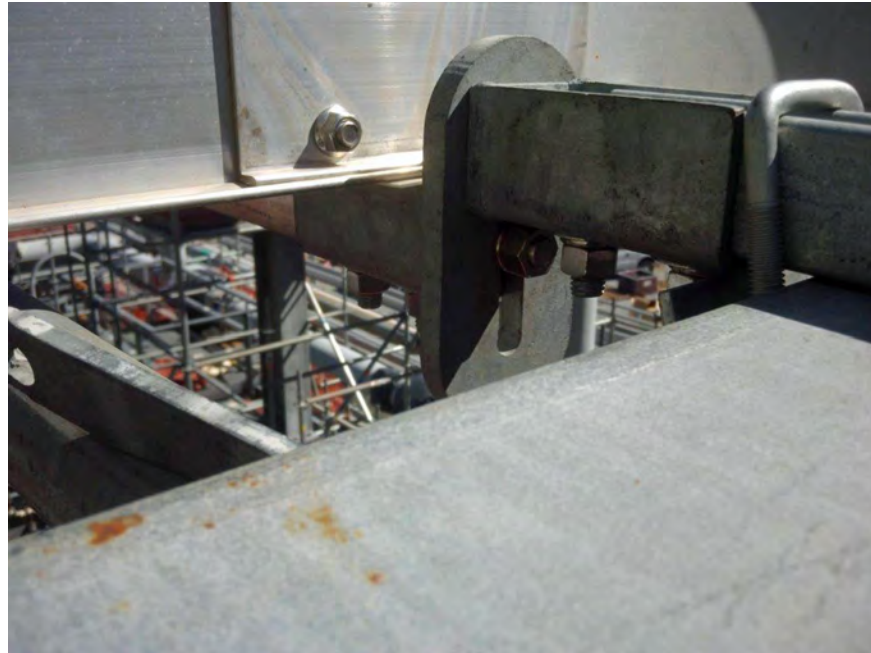
For use in the installation of unistrut as support for cable tray, tubing tray and small bore pipe. Clamps to any diagonal, horizontal, or vertical structure. Both ends rotate a full 360 degrees. Can be installed at any angle. Utilizes two of the Single or Double Rotating Bracket Components, or Two Square Bracket Components.

*THE MOST VERSATILE SUPPORT AVAILABLE*

*The Offset Bracket Kit Makes Difficult Tray Runs Easy To Support,  
No Need To Cut The Grating.*



## Offset Bracket Kits / Supports



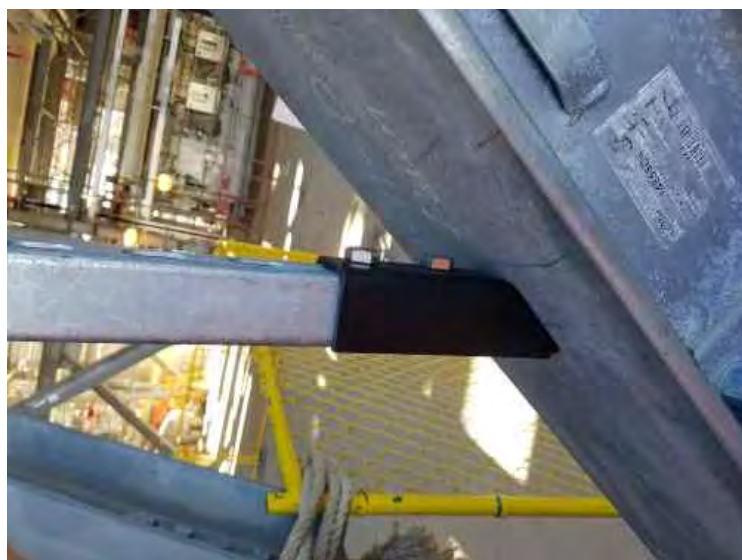
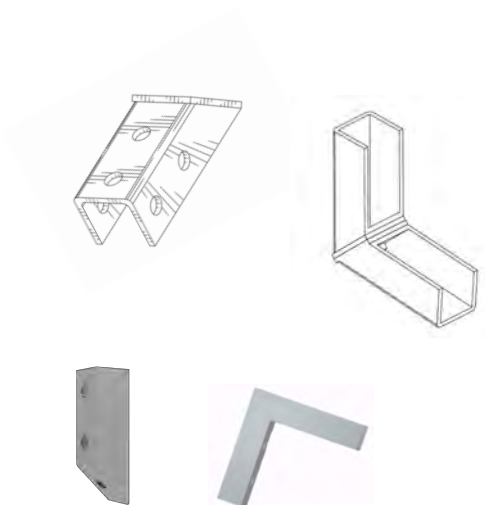
***Don't Cut The  
Grating or Make  
That Time  
Consuming  
Bend!!***

***Bolts Together With Ease .  
Both Ends Rotate A Full 360  
Degrees For Maximum  
Versatility***



***For Use With Single Unistrut or Double Strut.***

## 45 Degree Bracket / 90 Degree Bracket Kit / Supports



### 45 Degree Bracket / 094517SSHDG 90 Degree Bracket Kit / 1090C17SSHDG

#### PRODUCT SPECIFICATIONS

Material	Hot Dipped Galvanized ASTM A123; Stainless Steel 304
Product Dimensions	Weight 1 lb 8oz; 4 1/2" x 2 7/8", Thickness 1/4", Hole Diameter - Base 33/64" Sides 9/16"; Fits 1 5/8" x 1 5/8" Channel
Load Limits	Vertical Load Limits - 4,500lbs; Horizontal Load- 4,500lbs, Tensile Load - 4,000lbs, Seismic Load Limit - 4,000lbs; Safety Factor 4:1;ANSI- N45.2/NFPA 70-NEC Article 384
Material Required For Installation	304 or 316 Stainless Steel Hex Head Bolt 1/2" diameter, 1 1/4" length, ASME B18.2.1;

**For the installation of Single Unistrut directly to Beam, Concrete, Grating or Column. Works as a Kicker or Brace for Instrument Stands.**



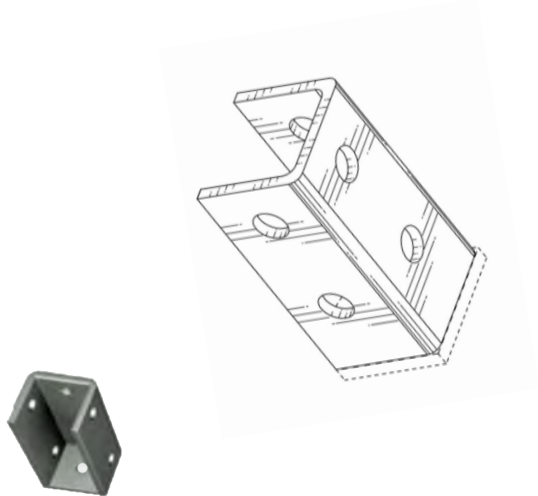


## 45 Degree Bracket / 90 Degree Bracket Kit / Supports





## Square Bracket / Supports



## Square Bracket / 11SQA17SSHDG

### PRODUCT SPECIFICATIONS

Material	Hot Dipped Galvanized ASTM A123; Stainless Steel 316
Product Dimensions	Weight 1 lb 8oz; 4 1/2" x 2 7/8", Thickness 1/4", Hole Diameter - Base 33/64" Sides 9/16"; Fits 1 5/8" x 1 5/8" Channel
Load Limits	Vertical Load Limits - 4,500lbs; Horizontal Load- 4,500lbs, Tensile Load - 4,000lbs, Seismic Load Limit - 4,000lbs; Safety Factor 4:1;ANSI- N45.2/ NFPA 70-NEC Article 384
Material Required For Installation	304 or 316 Stainless Steel Hex Head Bolt 1/2" diameter, 1 1/4" length, ASME B18.2.1;

**For the installation of Single Unistrut directly to Beam, Concrete, Grating or Column. Rotates 360 Degrees. Mount Bracket before inserting Unistrut for easier installation. No welding required.**

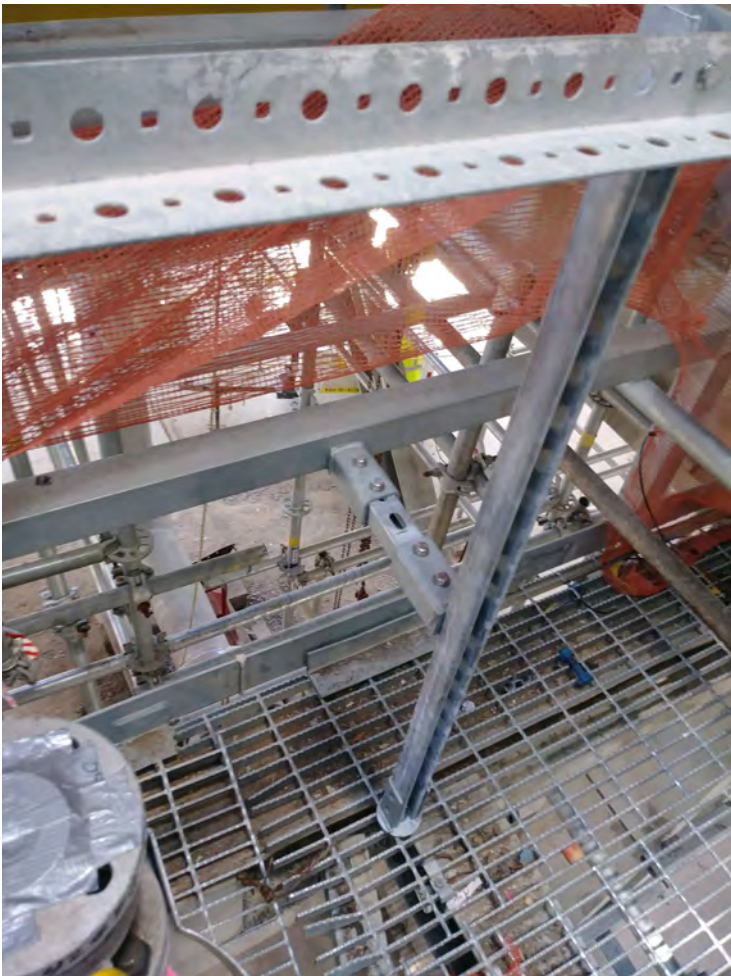


**Same Result...A Third Of The Cost**

## Square Bracket / Supports

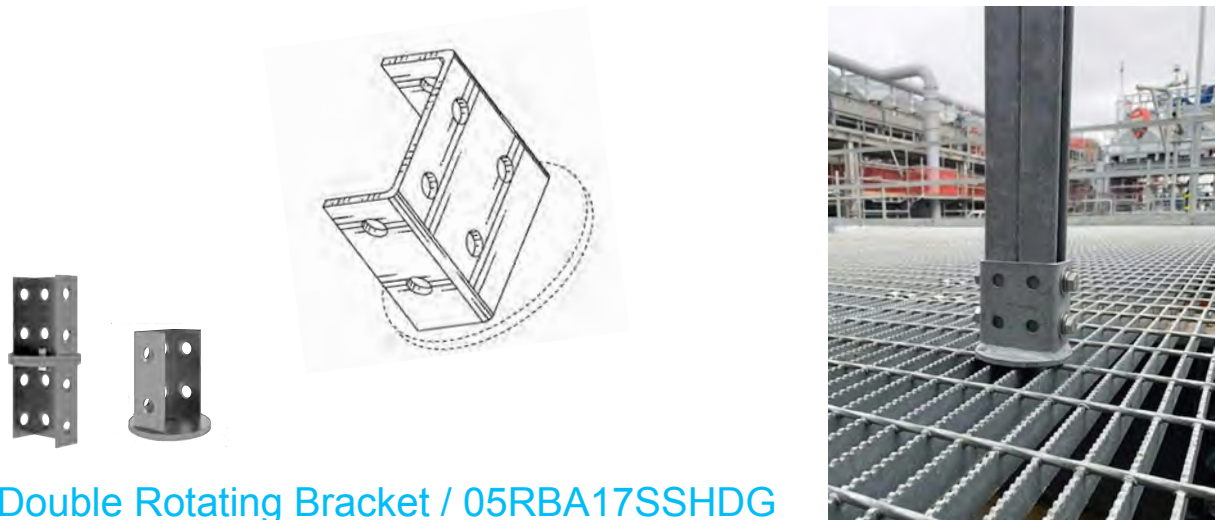


## APPLICATIONS





# Double Rotating Bracket / Double Rotating Bracket Kit / Supports



## Double Rotating Bracket / 05RBA17SSHDBG Double Rotating Bracket Kit / 06RBC17SSHDBG

### PRODUCT SPECIFICATIONS

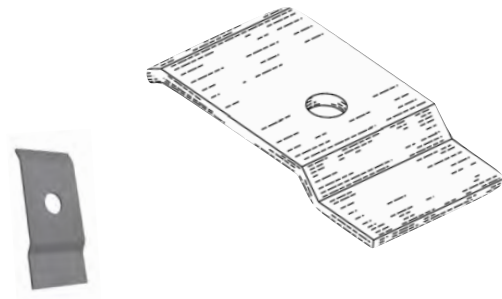
Material	Hot Dipped Galvanized ASTM A123; Stainless Steel 316
Product Dimensions	Weight 2 lbs 6 oz; 4 1/2" x 2 7/8", Thickness 1/4", Hole Diameter - Base 33/64" Sides 9/16"; Fits - 1 5/8" x 3 1/4" Channel
Load Limits	Vertical Load Limits - 4,500lbs; Horizontal Load- 4,500lbs, Tensile Load - 4,000lbs, Seismic Load Limit - 4,000lbs; Safety Factor 4:1;ANSI- N45.2/NFPA 70-NEC Article 384
Material Required For Installation	304 or 316 Stainless Steel Hex Head Bolt 1/2" diameter, 1 1/4" length, ASME B18.2.1; For Rotating Bracket Kit use (2) Stainless Steel Bolts and (2) Window Clamps

**For the installation of Double Strut directly to Beam, Concrete, Grating or Column. Rotates 360 Degrees. Mount Bracket before inserting Unistrut for easier installation. No welding required.**





## Universal Tray Clamp / Guide



## Universal Tray Clamp /Guide / 18RTC17SSHDG

Used to Clamp or Guide cable tray to Steel. Available in HDG, 316L Stainless Steel



**THEIRS**



**OURS**



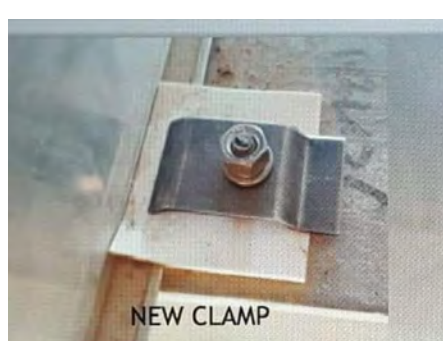
OLD GUIDE



NEW GUIDE



OLD CLAMP

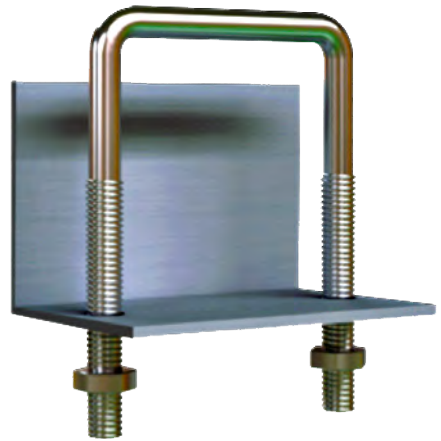


NEW CLAMP

*\*Their clamp is not reversible on a steel application, which can lead to costly rework. See Below*



## BEAM CLAMPS



Single Unistrut Beam Clamp / 12SWC17HDG;13SWC17SS  
Double Strut Beam Clamp / 14DWC17HDG;15DWC17SS

\*\*\*AVAILABLE IN STAINLESS STEEL AND HOT DIPPED GALVANIZED. SS, HDG AT THE END OF THE MODEL NUMBER DENOTES THE FINISH



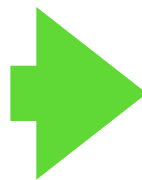
*\* More Often Than Not This Scenario is Considered To Be Permanent Installation*



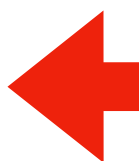
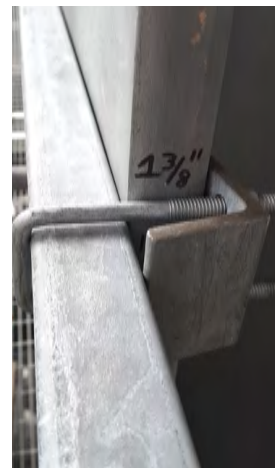
*The old model fails to sit flush with larger beams and is designed with a shorter curved edge that makes it hard to secure the material well.*

**THEIRS**

**OURS**

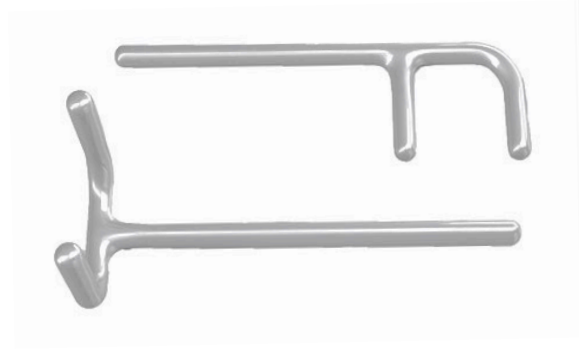


*The New Design has a Longer Flat Edge with a Defined Right Angle To Sit Flush With The Beam and Firmly Secure The Material, Without The Use of Makeshift Spacers*



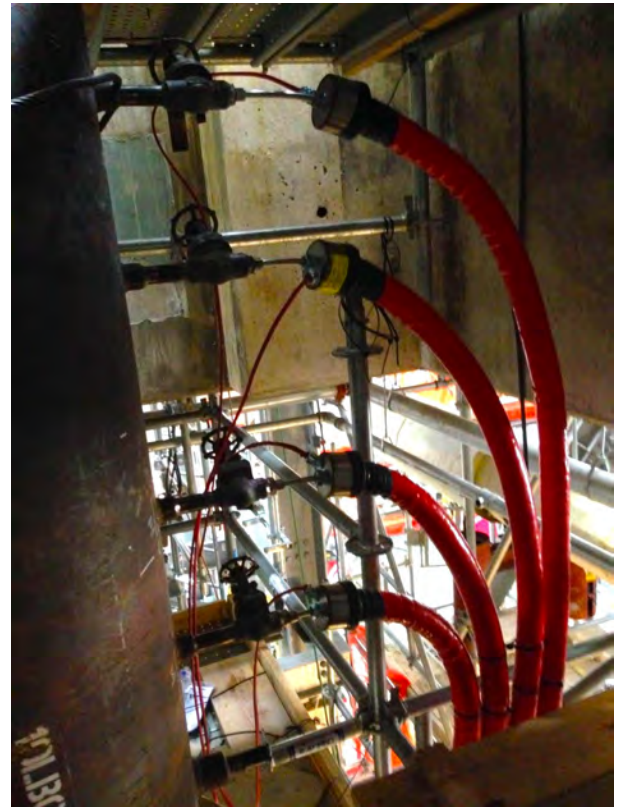


## TUBING BUNDLE BENDERS / TOOLS



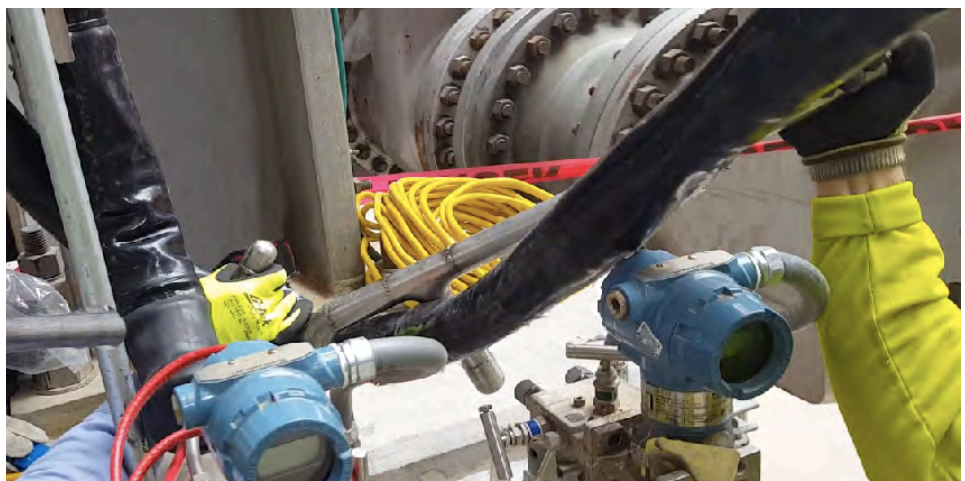
Tubing Bundle Benders / 01TBB17SS

Designed to bend tube bundle safely and with ease.



**THE  
RESULTS**

...



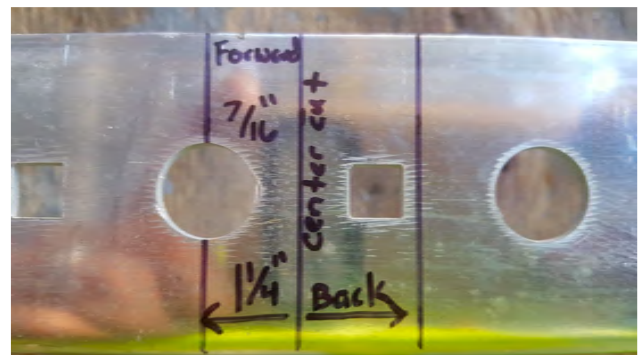


## TRAY BENDERS / TOOLS



### Tray Benders / 04TB17SS

Designed to bend tubing tray, both inside and outside angles. Manufactured with 316L Stainless Steel; Firm Grip Handles, Engineered with a Safety Factor of 4.



## SAFETY CORD MANAGEMENT BRACKET / SAFETY SUPPORT

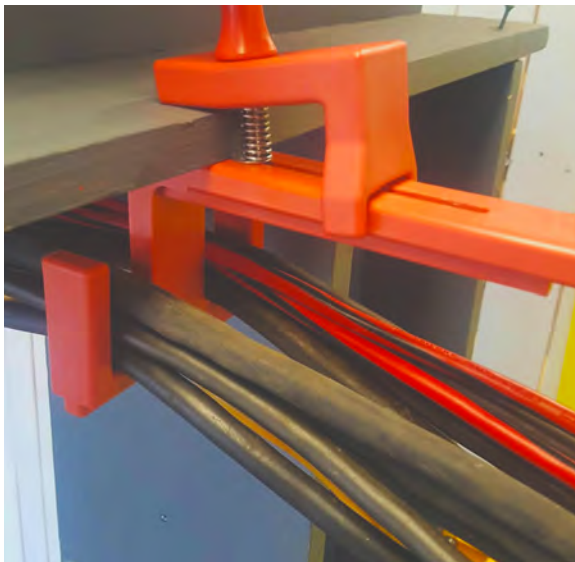
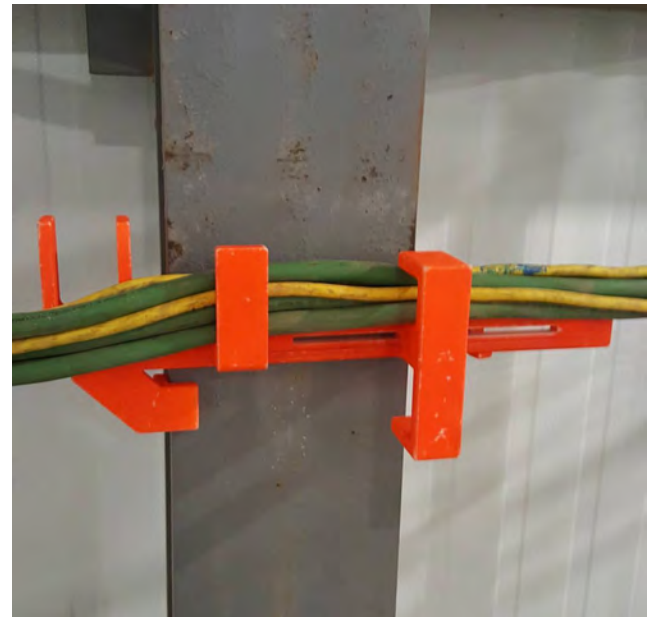


### Safety Cord Management Bracket / SCM18Q / SCM18R

Affix directly to I-beams in three positions overhead, horizontal and vertical. Fits flange size 4" to 12", and 12" to 24" supports beam thickness of 1 1/4" to 3 1/4" .

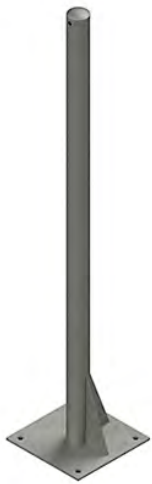
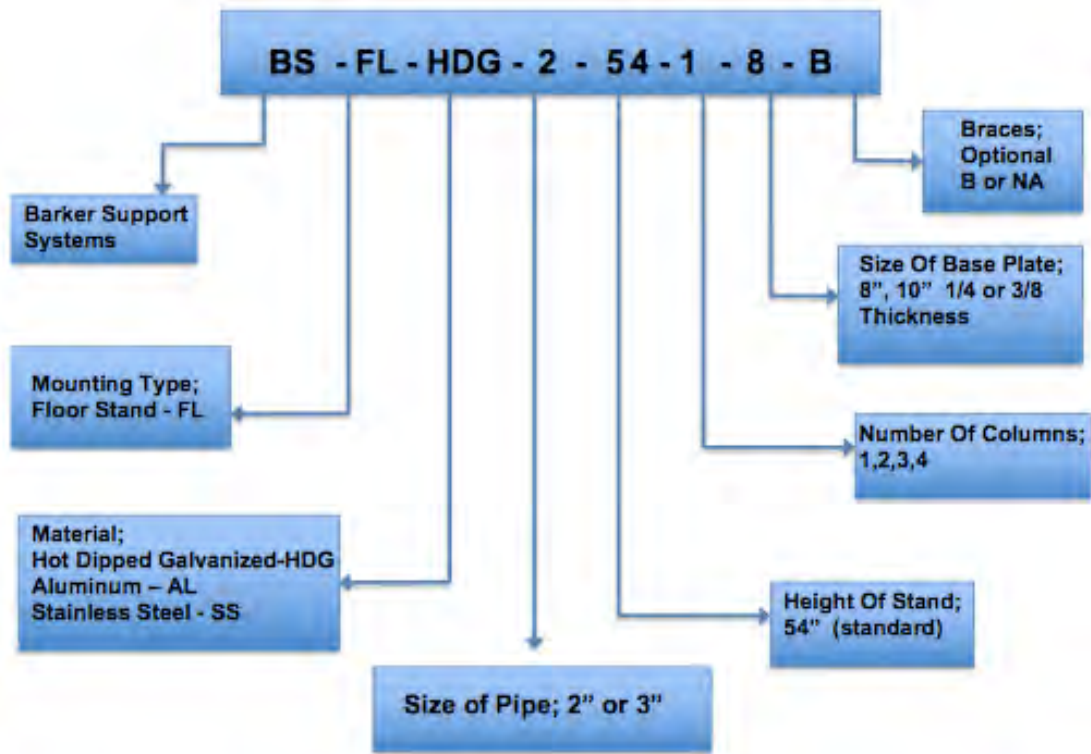


*No more messy  
cords and leads,  
running over  
beams and in and  
around walkways.  
Improve Site  
Safety with our  
Cord  
Management  
Bracket*





## FLOOR MOUNT / STANDS



### SINGLE INSTRUMENT FLOOR MOUNT STAND

Instrument stands are fabricated from 2" Schedule 40 pipe with 8"x 8"x 3/8" base plate. Stands are hot dipped galvanized meeting ASTM A123/89 requirements.

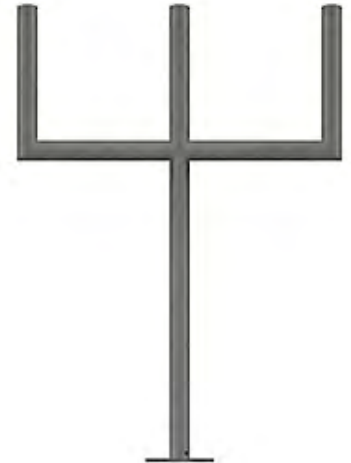
**Model #BS-FL-HDG-2-54-1-8-B**



### DOUBLE INSTRUMENT FLOOR MOUNT STAND

Instrument stands are fabricated from 2" Schedule 40 pipe with 8"x 8"x 3/8" base plate. Stands are hot dipped galvanized meeting ASTM A123/89 requirements.

**Model #BS-FL-HDG-2-54-2-8-B**



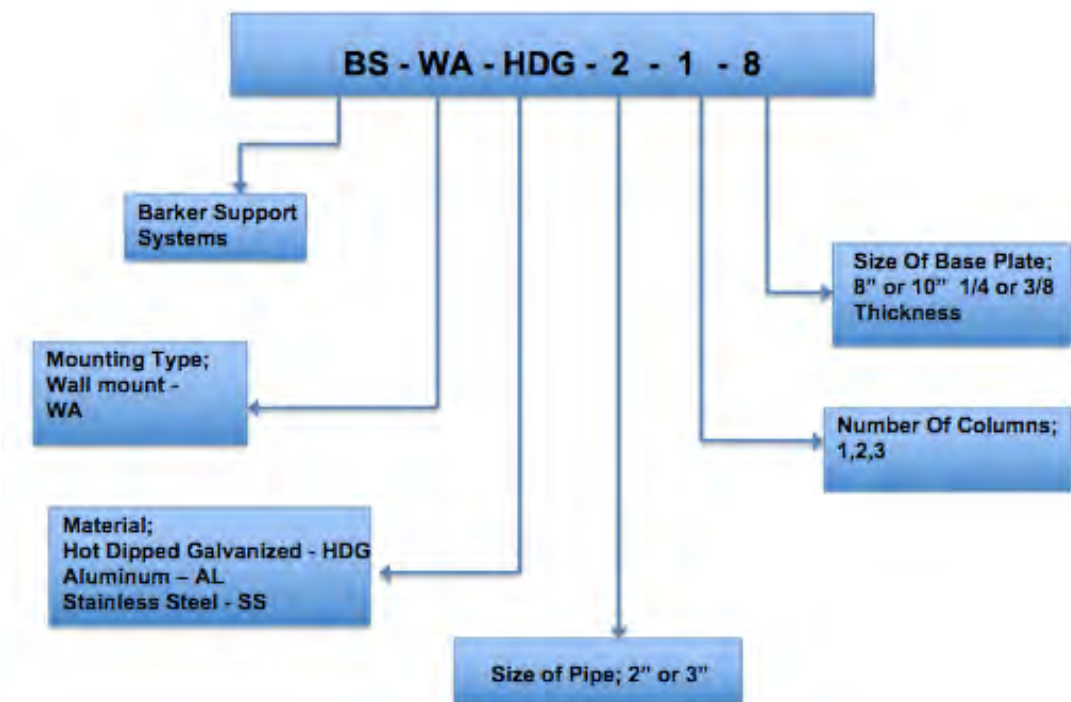
### TRIPLE INSTRUMENT FLOOR MOUNT STAND

Instrument stands are fabricated from 2" Schedule 40 pipe with 8"x 8"x 3/8" base plate. Stands are hot dipped galvanized meeting ASTM A123/89 requirements.

**Model #BS-FL-HDG-2-54-3-8-B**



## WALL MOUNT / STANDS



### SINGLE INSTRUMENT WALL MOUNT STAND

Instrument stands are fabricated from 2" Schedule 40 pipe with 8"x 8"x 3/8" base plate. Stands are hot dipped galvanized meeting ASTM A123/89 requirements.

**Model #BS-WA-HDG-2-1-8**



### DOUBLE INSTRUMENT WALL MOUNT STAND

Instrument stands are fabricated from 2" Schedule 40 pipe with 8"x 8"x 3/8" base plate. Stands are hot dipped galvanized meeting ASTM A123/89 requirements.

**Model #BS-WA-HDG-2-2-8**



### CAPILLARY SQUIRREL CAGE

8" Schedule 40 Carbon Steel Capillary Spool.

This spool can be mounted horizontally or vertically. Mounts with 2" u-bolt. Hot dipped galvanized (meeting ASTM A 123-89 specification).

**Model #BS-SM-HDG-2-SQ**



**SINGLE ROTATING BRACKET - 01RBA17SSH DG**

For the installation of single unistrut, bolts with one hole to any structure no matter the angle, rotates 360 degrees. No Welding Required.



**SINGLE ROTATING BRACKET KIT - 02RBC17SSH DG**

Clamps to any diagonal, horizontal or vertical structure, both ends rotate 360 degrees, easy installation. No Welding Required.



**SINGLE OFFSET PLATE - 03OS17SSH DG**

Works with Single Offset Bracket Kit



**SINGLE OFFSET BRACKET KIT - 40SC17SSH DG**

Clamps to structure, reducing the need for multiple offsets during the installation of conduit, cable tray, pipe and tubing tray.



**DOUBLE ROTATING BRACKET - 05RBA17DSH DG**

For the installation of double unistrut, bolts with one hole to any structure no matter the angle, rotates 360 degrees. No Welding Required.



**DOUBLE ROTATING BRACKET KIT - 06RBC17DSH DG**

Clamps to any diagonal, horizontal or vertical structure, both ends rotate 360 degrees, easy installation.



### **DOUBLE OFFSET BRACKET KIT - 08OSC17DSHDG**

Clamps to structure, reducing the need for multiple offsets and able to run multiple lines, during the installation of conduit, cable tray, tubing tray, and pipe.



### **DOUBLE OFFSET PLATE - 07OS17DSHDG**

Works with Double Offset Bracket Kit



### **45 DEGREE BRACKET - 094517SSHDG**

Bolts to unistrut, or structure. Compatible with every component of support systems. Very versatile can be installed as kickers, braces, etc.



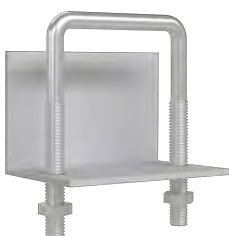
### **90 DEGREE BRACKET KIT - 1090C17SSHDG**

Two 45 degree brackets bolted together to make 90 degree angles in the installation of unistrut to fabricate L brackets or trapeze hangers.



### **SQUARE BRACKET - 11SQA17SSHDG**

For the installation of single unistrut, it bolts flush against flat surfaces at any angle, on any structure, rotates 360 degrees.



### **SINGLE UNISTRUT BEAM CLAMP**

Clamps single unistrut to beams with 1 1/4" to 2" flanges. Available in HDG, SS

**Model # 12SWC17HDG; Model #13SWC17SS**





### **DOUBLE UNISTRUT BEAM CLAMP**

Clamps double unistrut to beams with 1 1/4" to 2" flanges. Available in HDG,SS

Model #14DWC17HDG ; Model #15DWC17SS



### **SINGLE ROTATING BRACKET - 0114RBA17SSHDG TWO BOLT APPLICATION**

For the installation of single unistrut, bolts with one hole to any structure no matter the angle, rotates 360 degrees. No welding required.



### **SINGLE ROTATING BRACKET KIT - 0214RBC17SSHDG TWO BOLT APPLICATION**

Clamps to any diagonal, horizontal or vertical structure, both ends rotate 360 Degrees, easy installation of unistrut No welding required.



### **SAFETY CORD MANAGEMENT BRACKET**

Affix directly to I-beams in three positions - overhead, horizontal and vertical. Fits flange size 4" to 12", supports beam thickness of 1 1/4" to 3 1/4" **Model #SCM18Q**



### **TRAY BENDERS**

Designed to bend tubing tray, both inside and outside angles, the safe way. **Model #04TB17SS**



### **TUBING BUNDLE BENDERS**

Designed to bend tube bundle, the safe way. **Model #01TBB17SS**

## AVERAGE COST TO WELD SUPPORTS TO BEAM

### MAN HOURS

- Welder x 2 hours
- Fire watch x 2 hours
- Fitter x 2 hours
- Helper x 2 hours

### CONSUMABLES

- Welding Blind \$150
- Welding Rods \$10
- Grinding Disc \$10
- Fuel \$10
- Paint \$5
- Face shield \$5
- Fire Blanket \$10

### POTENTIAL ADDITIONAL SAFETY HAZARDS

- Burns to Eyes and Skin
- Hazardous Fumes
- Fire Hazard
- Hearing Loss
- Debris in eyes
- Tripping from cords and leads

### Additional Cost

- Welding Machine - \$1800 Monthly

Total Man Hours Estimate  $8 \times \$120 = \$960$

Consumables Cost Per Light - \$210

5 Lights Installed Per Day - \$5,850

Installed Per Year (260 Work Days) - \$1,521,000

ITEM No	PRODUCT CODE	QTY	DESCRIPTION
1		10 LF	CONDUIT, RGS, STRAIGHT, 1-1/2" DIA., W/COUPLING
2		2 EA	SUPPORT MATL, U BOLT, SS 316, 2" OD, WITH NUTS
3		2 LF	BAR, GALVANIZED, 9"x2"x1/4" FLAT
4		1 EA	CONDUIT BODY, 1 1/2" T, CRSH *T58, FORM 8, (W/COVER & GASKET
5		2 EA	CONDUIT, REDUCER, ALUMINIUM, 1 1/2" - 3/4", C-H #RE52-SA
6		4 EA	LOCKWASHERS, STAINLESS STEEL, 3/8" HELICAL

## AVERAGE COST INSTALLATION OF BARKER BRACKET

- Fitter x 1 hour
- Helper x 1 hour
- Barker Bracket cost \$70 x 2
- Bolts \$20

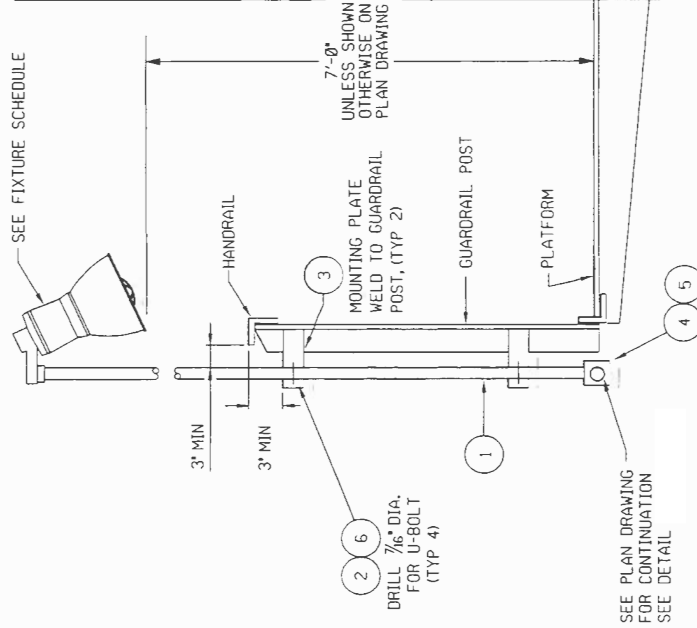
### ADDITIONAL COST

- Drill - \$860 Per Year

## NO ADDITIONAL SAFETY HAZARDS



SAFETY FACTOR 4  
VERTICAL LOAD LIMIT - 4,500 lbs  
HORIZONTAL LOAD LIMIT-4,500 lbs



NO.	DATE	REVISION	BY	CHK'D	PROG	MECH	CS	ENG	LEAD	ENG	AREA	ENG	PER	CLIENT	NO.
002		ISSUED FOR CONSTRUCTION												N/A	
001		RE-ISSUED FOR CONSTRUCTION												N/A	



BARKER SUPPORT SYSTEMS LLC  
ELECTRICAL  
LIGHTING DETAIL  
STANCHION MOUNTED FIXTURE

Example of Cost Savings On Stanchion Lighting.



# VISIT US ON THE WEB AT [BARKERSUPPORTSYSTEMS.COM](http://BARKERSUPPORTSYSTEMS.COM)

**ABOUT US** With a combined total of over 50 years experience, our products are designed with safety, quality and cost efficiency in mind. The thing that sets us apart is that our products are designed by the average construction worker for the average construction worker. Every product we make addresses a need or concern that we have personally encountered on the job site out in the field. But we don't stop there our products also benefit the client by reducing the amount of man hours and materials needed to get the job done, while making the job safer for all.

Recently established, we are the fastest growing industrial support company in America today. Owned and operated in beautiful Southwest Louisiana, we take environmental safety seriously as well.. by producing products that help to eliminate the environmental waste associated with welding and grinding we help keep Louisiana Beautiful.

**3826 Airhart Road Lake Charles, LA 70605**  
**310-347-9076 276-880-4759**

[shon@barkersupportsystems.com](mailto:shon@barkersupportsystems.com)

[jennifer@barkersupportsystems.com](mailto:jennifer@barkersupportsystems.com)

[charlie@barkersupportsystems.com](mailto:charlie@barkersupportsystems.com)

[weylan@barkersupportsystems.com](mailto:weylan@barkersupportsystems.com)



**Follow Us On Facebook For New Product Updates**

