



Barker Support Systems LLC

4310 Ryan Street Suite 101 Lake Charles , LA70605

310-347-9076

thebarkerbracket@gmail.com

SAFETY, QUALITY & COST

In the industrial construction world today, we place a large emphasis on safety. We all work together to pinpoint and eliminate hazards and maintain a safer environment.

As a leader in industrial hygiene and the maker of products that are designed to make your job site safe while providing you with quality products, that are also more cost effective.

GLOBAL SUPPORTS





TABLE OF CONTENTS

PAGES 1-2..... Single Rotating Bracket Component; Single Rotating Bracket Kit 2 Bolt Application

PAGES 3-4..... Single Rotating Bracket Kit; Single Rotating Bracket Kit 2 Bolt Application

PAGES 5-6.... Single Offset Plate; Single Offset Bracket Kit

PAGES 7-8... Double Rotating Bracket Component; Double Rotating Bracket Kit

PAGES 9-10... Double Offset Plate; Double Offset Bracket Kit; Square Bracket

PAGES 11-12...45 Degree Bracket; 90 Degree Bracket Kit

PAGES 13-14...Single Unistrut Beam Clamp; Double Unistrut Beam Clamp; Universal Tray Clamp/Guide

PAGES 15-16....Floor Mount Instrument Stands; Wall Mount Instrument Stands

PAGES 17-18....Tray Benders; Tubing Bundle Benders

PAGES 19-20...Cord Management Bracket; Solutions Team



SINGLE ROTATING BRACKET COMPONENT

For the installation of single unistrut, bolts with one hole to any structure no matter the angle, rotates 360 degrees. No Welding Required. Model # 01RBA17SSHHDG



QUALITY

NO RUST, NO WELDING,
Eliminate the use of excess materials and time fabricating supports.

Increase your productivity, while reducing the risk of safety incidents.



BOLTS TO BEAM AT ANY ANGLE

THE ONLY WELD-LESS SUPPORT SYSTEM

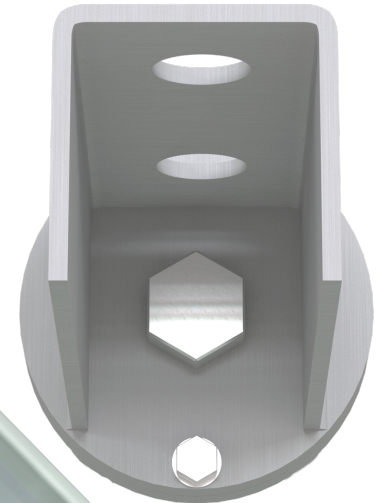
**** Over 60% of jobsite injuries result from welding*



SINGLE ROTATING BRACKET COMPONENT TWO BOLT APPLICATION

For the installation of single unistrut, bolts with one hole to any structure no matter the angle, rotates 360 degrees. No welding required.

Model#0114RBA17SSHDG



Single Rotating Bracket Component and Two Bolt Application

01RBA 17SSHDG ; 0114RBA17SSHDG

MATERIAL - A36

WEIGHT - 1 LB 8OZ ; 0.68 Kg

PRODUCT DIMENSION - 4 1/4" X 2 7/8"

FINISH - HDG ASTM A123

THICKNESS - 1/4"

HOLE DIAMETER - BASE 33/64" SIDES 9/16"

FITS - 1 5/8" X 1 5/8" CHANNEL

VERTICAL LOAD LIMIT - 3,000 Lbs;

2IN - 0.3754 SPAN, Ft; 4,110 PEAK LOAD, Lbf; 1,540

HORIZONTAL LOAD LIMIT 3,000 Lbs;

2IN - 0.3750 SPAN, Ft; 3,405 PEAK LOAD, Lbf; 1,280

ASTM - A123, A36; ANSI - N45.2/NFPA 70 -NEC Article 384

SAFETY FACTOR - 4:1

MATERIAL REQUIRED FOR INSTALLATION -304 OR 316

Stainless Steel Hex Head Bolt 1/2" diameter, 1 1/4" length, ASME

B18.2.1; UNS S3160, 304 or 316 Stainless Steel Hex Head Bolt 1/4" diameter

*Custom load testing using a Satec , Satec Model 120HVL, S/

N: 1263,

calibration due 4/27/18

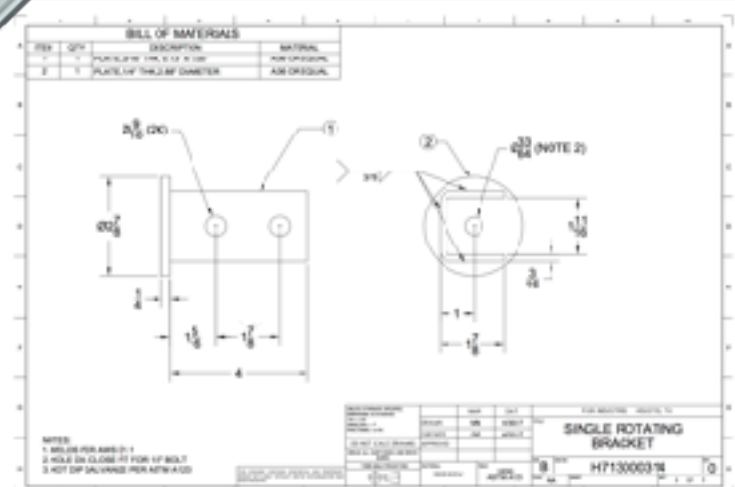
Testing by Metallurgical Engineering Services, Inc. Firm

Registration No. F-2674

Richardson, Texas ; For a complete copy of metal and material

testing results please email your requests to

jennifer@barkersupportsystems.com



SINGLE ROTATING BRACKET KIT

Clamps to any diagonal, horizontal or vertical structure, both ends rotate 360 degrees, easy installation. No Welding Required.

Model#02RBC17SSHDG



INSTALLS IN MINUTES

THE SAFE SOLUTION

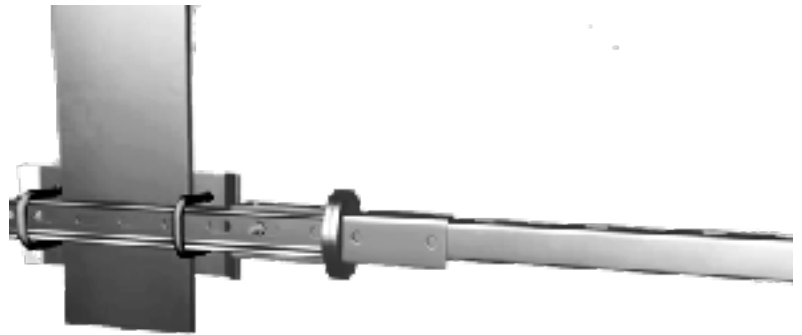
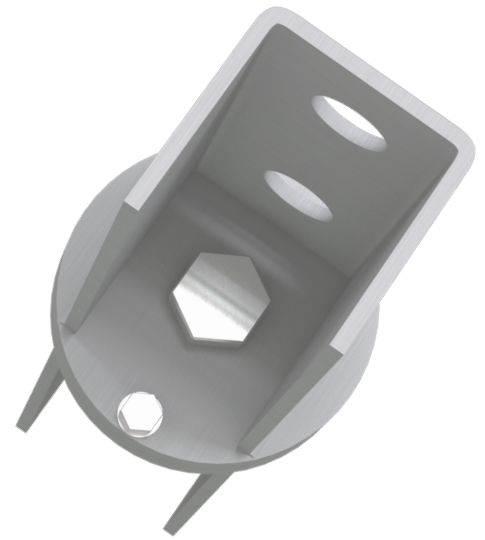
QUALITY PERMANENT SUPPORTS



SINGLE ROTATING BRACKET KIT TWO BOLT APPLICATION

Clamps to any diagonal, horizontal or vertical structure, both ends rotate 360 Degrees, easy installation of unistrut. No welding required.

Model#0214RBC17SSHDG



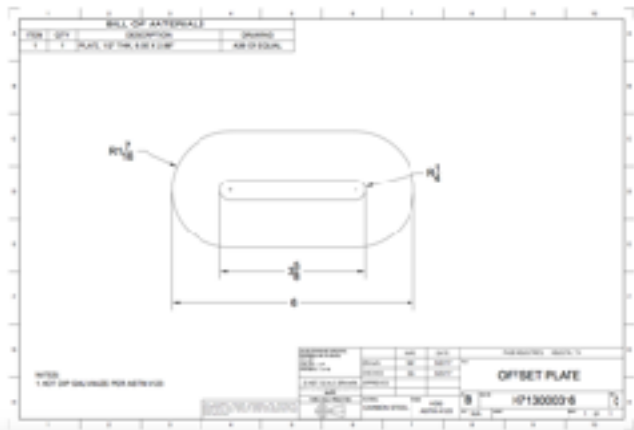
SINGLE OFFSET PLATE

Works with Single Offset Bracket Kit

Model # 03OS17SSHDG



PRODUCT NAME – Single Offset Plate
 MODEL NUMBER – 03OS17SSHDG
 MATERIAL – A36
 WEIGHT – 2 Lbs; .90 Kg
 DIMENSIONS – 6" x 2 7/8"
 FINISH- HDG ASTM A123
 THICKNESS – 1/2"
 HOLE DIAMETER – 1/2" Oval
 FITS – Single Rotating Bracket
 VERTICAL LOAD LIMIT – 1,500 lbs
 2IN - 2,300 PEAK LOAD, Lbf; 1,000 ;
 HORIZONTAL LOAD LIMIT – 1,500 LBS
 2IN - 2,300 PEAK LOAD, Lbf; 1,100 TASTM - A123, A36;
 ANSI - N45.2/ NFPA 70 –NEC Article 384
 SAFETY FACTOR – 4:1
 MATERIAL INCLUDED FOR INSTALLATION – (2) 304 OR 316
 Stainless Steel Hex Head Bolt 1/2" diameter, 1 1/4" length, ASME
 B18.2.1; UNS S3160
 *Custom load testing using a Satec , Satec Model 120HVL, S/N:
 1263,
 calibration due 4/27/18
 Testing by Metallurgical Engineering Services, Inc. Firm
 Registration No. F-2674
 Richardson, Texas ; For a complete copy of metal and material
 testing results please email your requests to
 jennifer@barkersupportsystems.com



SINGLE OFFSET BRACKET KIT

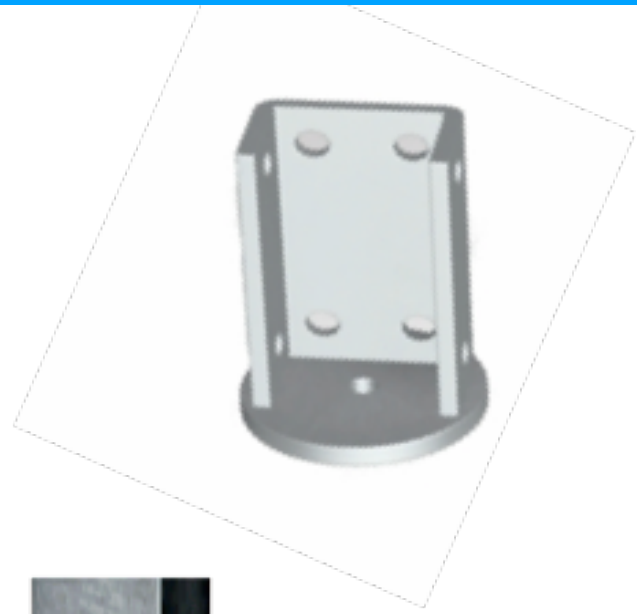
Clamps to structure, reducing the need for multiple offsets during the installation of conduit, cable tray, pipe and tubing tray.

Model # 04OSC17SSHDG



DOUBLE ROTATING BRACKET COMPONENT

For the installation of double unistrut, bolts with one hole to any structure no matter the angle, rotates 360 degrees. No Welding Required.
Model # 05RBA17DSHDG



PRODUCT NAME – Double Strut Rotating Bracket Component

MODEL NUMBER – 05RBA17DSHDG

MATERIAL – A36

WEIGHT – 2 Lbs 6oz. .90Kg

DIMENSIONS – 4 1/2" x 3 3/4"

Finish – HDG ASTM A123

THICKNESS – 1/4"

HOLE DIAMETER – Base 33/64" Sides 9/16"

FITS – 3 1/4" x 3 1/4" Channel

VERTICAL LOAD LIMIT – 3,500 Lbs

4IN - 0.3854 SPAN, Ft; 4,462 PEAK LOAD, Lbf; 1,720 TORQUE

HORIZONTAL LOAD LIMIT – 3,000 Lbs

4IN - 0.3542 SPAN, Ft; 3,629 PEAK LOAD, Lbf; 1,290 TORQUE

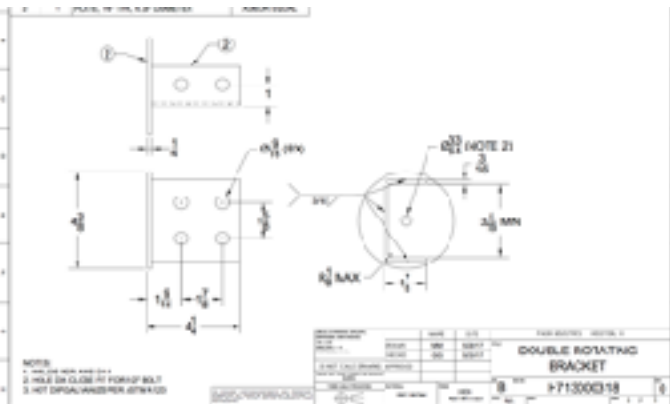
ASTM - A123, A36; ANSI - N45.2/NFPA 70 –NEC Article 384

SAFETY FACTOR – 4:1

MATERIAL REQUIRED FOR INSTALLATION –304 OR 316 Stainless Steel Hex Head Bolt 1/2" diameter, 1 1/4" length, ASME B18.2.1; UNS S3160

*Custom load testing using a Satec , Satec Model 120HVL, S/N: 1263, calibration due 4/27/18

Testing by Metallurgical Engineering Services, Inc. Firm Registration No. F-2674 Richardson, Texas ; For a complete copy of metal and material testing results please email your requests to jennifer@barkersupportsystems.com



DOUBLE ROTATING BRACKET KIT

Clamps to any diagonal, horizontal or vertical structure, both ends rotate 360 degrees, easy installation.
Model #06RBC17DSHDG



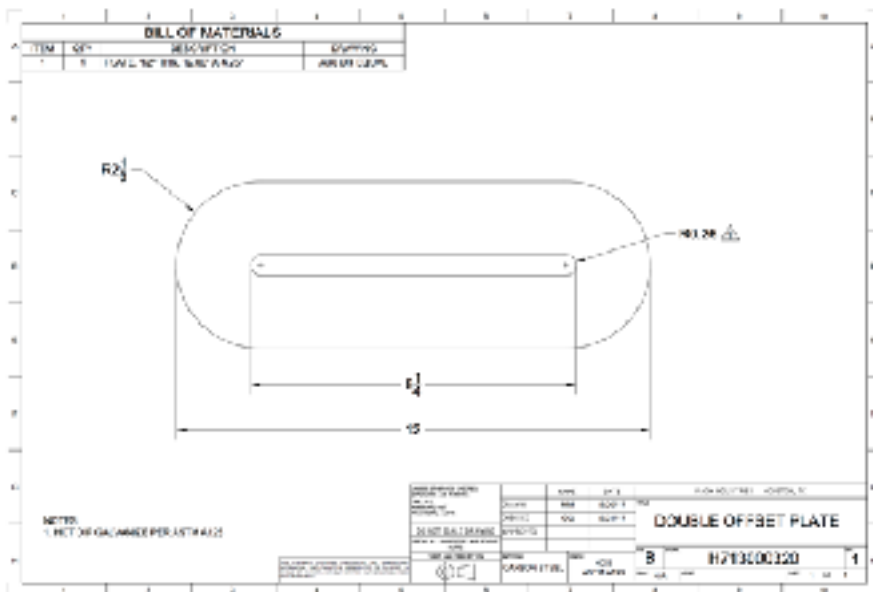
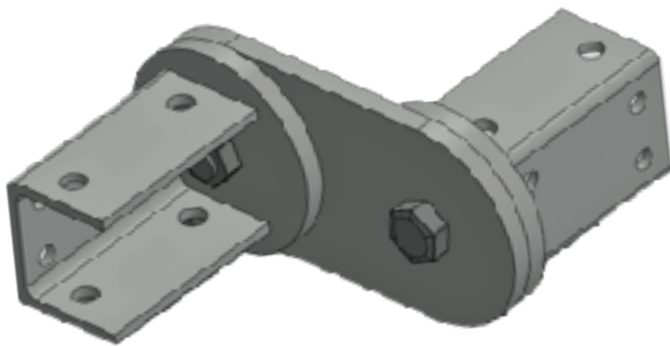
DOUBLE OFFSET PLATE

Works with Double Offset Bracket Kit
 Model #07OS17DSHDG



DOUBLE OFFSET BRACKET KIT

Clamps to structure, reducing the need for multiple offsets and able to run multiple lines, during the installation of conduit, cable tray, tubing tray, and pipe. Model #08OSC17DSHDG



SQUARE BRACKET

For the installation of single unistrut, it bolts flush against flat surfaces at any angle, on any structure, rotates 360 degrees.
 Model #11SQA17SSHDG



PRODUCT NAME – Square Rotating Bracket

Component

MODEL NUMBER – 11SQA17SSHDG

MATERIAL – A36

WEIGHT – 1 Lb 6 oz 1.6 Kg

DIMENSIONS – 4 1/4" x 2 1/8"

FINISH – HDG ASTM A123

THICKNESS – 1/4"

HOLE DIAMETER – Base 33/64" Sides 9/16"

FITS – 1 5/8" x 1 5/8" CHANNEL

VERTICAL LOAD LIMIT – 3,000 Lbs

2IN - 0.3754 SPAN, Ft; 4,110 PEAK

LOAD, Lbf; 1,540 TORQUE Ft-Lbs;

HORIZONTAL LOAD LIMIT – 2,500 Lbs

2IN - 0.3750 SPAN, Ft; 3,405 PEAK

LOAD, Lbf; 1,280 TORQUE Ft-Lbs;

ASTM - A123, A36; ANSI - N45.2/NFPA 70 -

NEC Article 384

SAFETY FACTOR – 4:1

MATERIAL REQUIRED FOR INSTALLATION –

(1) 304 OR 316 Stainless Steel Hex Head Bolt 1/2"

diameter, 1 1/4" length, ASME B18.2.1; UNS

S3160

*Custom load testing using a Satec , Satec Model

120HVL, S/N: 1263,

calibration due 4/27/18

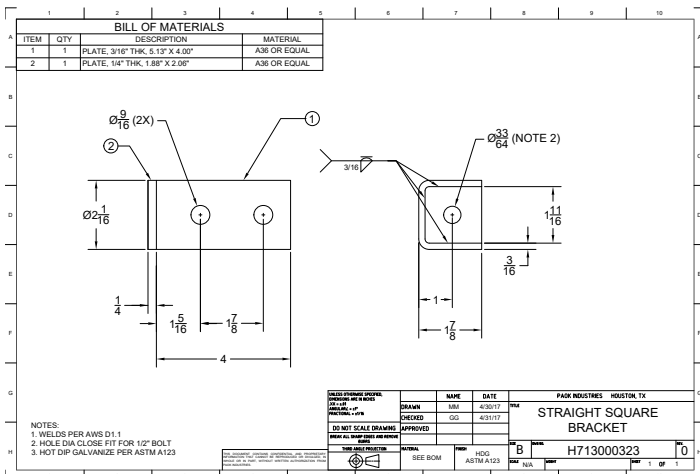
Testing by Metallurgical Engineering Services, Inc.

Firm Registration No. F-2674

Richardson, Texas ; For a complete copy of metal and

material testing results please email your requests to

jennifer@barkersupportsystems.com



90 DEGREE BRACKET KIT

Two 45 degree brackets bolted together to make 90 degree angles in the installation of unistrut, to fabricate L brackets or trapeze hangers. Model #1090C17SSHGDG

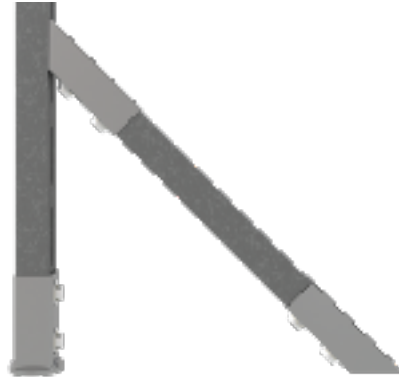


Eliminates the need for excess material, this versatile brackets bolts to any angle beam and fits flush and square.

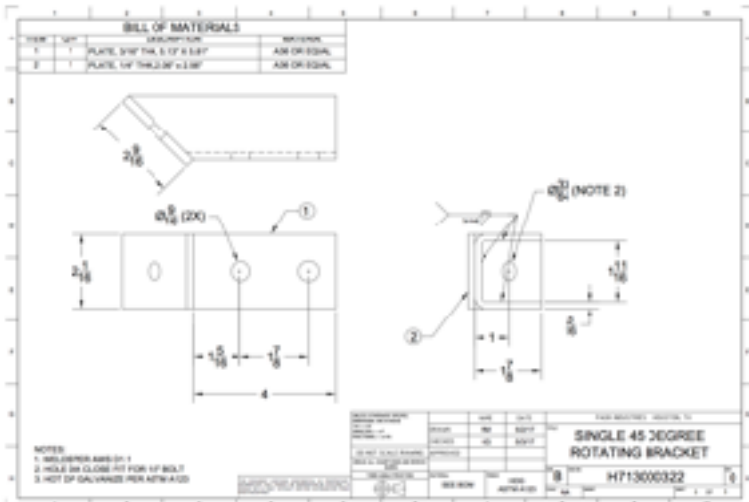
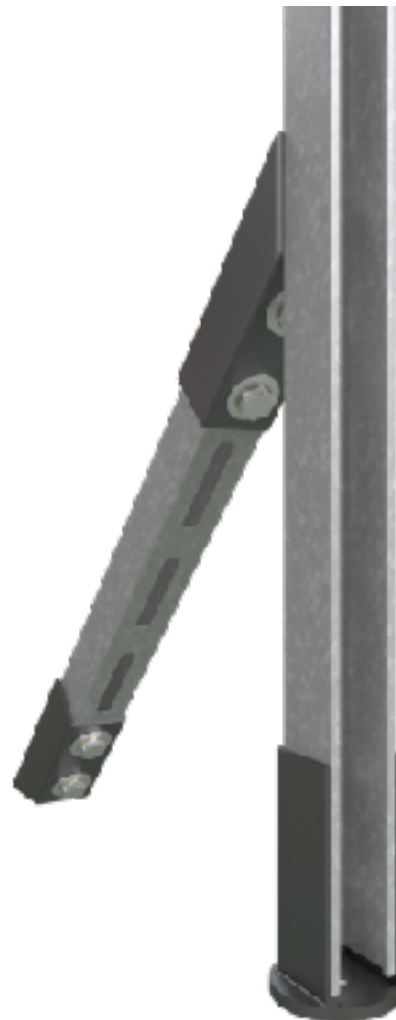


45 DEGREE BRACKET

Bolts to unistrut, or structure. Compatible with every component of support systems. Very versatile can be installed as kickers, braces, etc. Model #094517SSHDG



PRODUCT NAME – 45 Degree Bracket
 MODEL NUMBER – 094517SSHDG
 MATERIAL – A36
 WEIGHT – 1 Lb 12 Oz; .79 Kg
 DIMENSIONS – 6 3/8” x 2 1/8”
 FINISH - HDG ASTM A123
 THICKNESS – 1/4”
 HOLE DIAMETER – Base 33/64” Sides 9/16”
 FITS – 1 5/8” x 1 5/8” Channel
 VERTICAL LOAD LIMIT – 3,500 Lbs
 2 IN - 0.3754 SPAN, Ft; 4,110 PEAK LOAD, Lbf; 1,540 TORQUE Ft-Lbs;
 HORIZONTAL LOAD LIMIT – 2,500 Lbs
 2IN - 0.3750 SPAN, Ft; 3,405 PEAK LOAD, Lbf 1,280 TORQUE Ft-Lbs;
 ASTM - A123, A36; ANSI - N45.2/NFPA 70 –NEC Article 384
 SAFETY FACTOR – 4:1
 MATERIAL REQUIRED FOR INSTALLATION – (1) 304 OR 316 Stainless Steel Hex Head Bolt 1/2” diameter, 1 1/4” length, ASME B18.2.1; UNS S3160
 *Custom load testing using a Satec , Satec Model 120HVL, S/N: 1263, calibration due 4/27/18
 Testing by Metallurgical Engineering Services, Inc. Firm Registration No. F-2674
 Richardson, Texas ; For a complete copy of metal and material testing results please email your requests to jennifer@barkersupportsystems.com



SINGLE UNISTRUT BEAM CLAMP

Clamps single unistrut to beams with 1 1/4" to 2" flanges.

Model # 12SWC17HDG

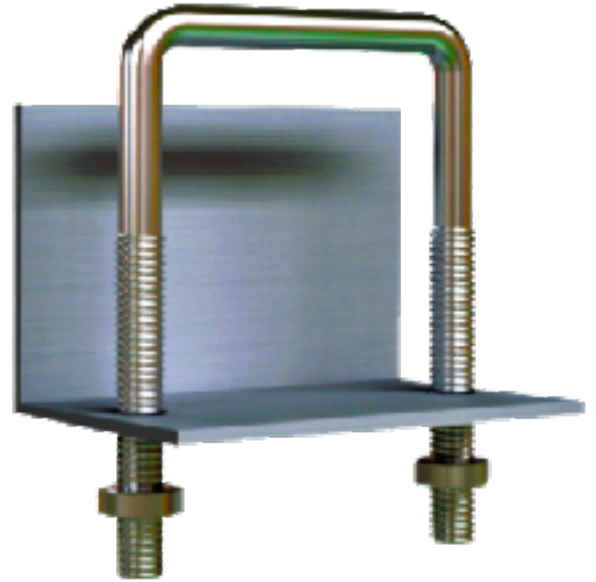
Model #13SWC17SS

DOUBLE UNISTRUT BEAM CLAMP

Clamps double unistrut to beams with 1 1/4" to 2" flanges.

Model #14DWC17HDG

Model #15DWC17SS



***AVAILABLE IN STAINLESS STEEL AND HOT DIPPED GALVANIZED SS, HDG AT THE END OF THE MODEL NUMBER DENOTES THE FINISH

No more messy spacers and excess material.



OLD CLAMPS



OUR CLAMPS



Universal Tray Clamp / Guide

Used to clamp or guide cable tray to steel

Model # 18RTC17SSHDG

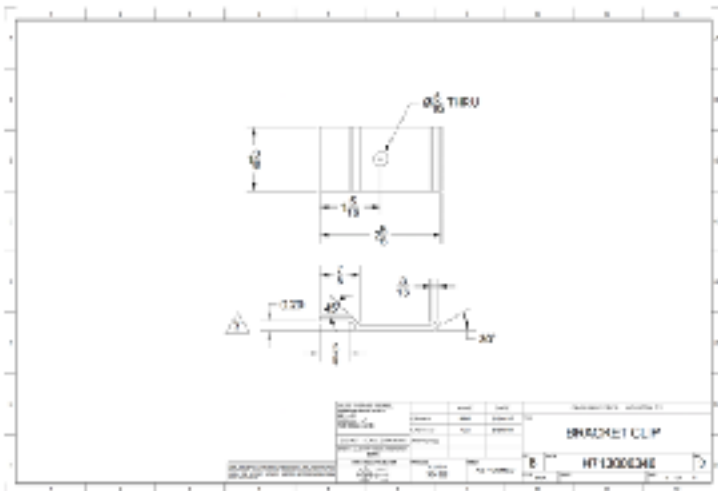


The old tray clamps are not reversible without breaking expensive bolts and lots of time consuming rework.

MORE FUNCTIONAL AND COST EFFECTIVE THAN THE CURRENT PRODUCT WIDELY USED TODAY



Completely Reversible without breaking the bolt, can be installed as a Guide or a Clamp.



SINGLE INSTRUMENT FLOOR MOUNT STAND; STANDARD

Instrument stands are fabricated from 2" Schedule 40 pipe with 8"x 8"x 3/8" base plate. Stands are hot dipped galvanized meeting ASTM A123/89 requirements.

Model #BS-FL-HDG-2-54-1-8-B

**DOUBLE INSTRUMENT FLOOR MOUNT STAND; STANDARD**

Instrument stands are fabricated from 2" Schedule 40 pipe with 8"x 8"x 3/8" base plate. Stands are hot dipped galvanized meeting ASTM A123/89 requirements.

Model #BS-FL-HDG-2-54-2-8-B

**TRIPLE INSTRUMENT FLOOR MOUNT STAND; STANDARD**

Instrument stands are fabricated from 2" Schedule 40 pipe with 8"x 8"x 3/8" base plate. Stands are hot dipped galvanized meeting ASTM A123/89 requirements.

Model #BS-FL-HDG-2-54-3-8-B



**SINGLE
INSTRUMENT WALL
MOUNT STAND;
STANDARD**

Instrument stands are fabricated from 2" Schedule 40 pipe with 8"x 8"x 3/8" base



**DOUBLE INSTRUMENT WALL MOUNT
STAND; STANDARD**

Instrument stands are fabricated from 2" Schedule 40 pipe with 8"x 8"x 3/8" base plate. Stands are hot dipped galvanized meeting ASTM A123/89 requirements. Model #BS-WA-HDG-2-2-8



CAPILLARY SQUIRREL CAGE

8" Schedule 40 Carbon Steel Capillary Spool.

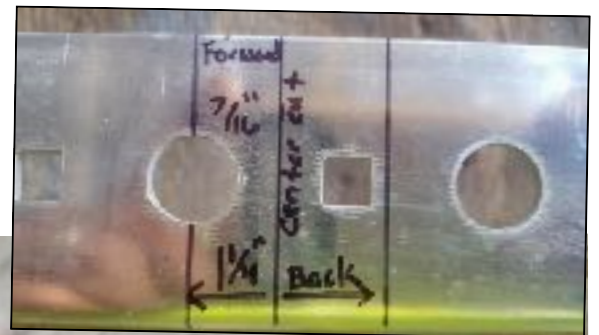
This spool can be mounted horizontally or vertically. Mounts with 2" u-bolt. Hot dipped galvanized (meeting ASTM A 123-89 specification).



TRAY BENDERS

Designed to bend tubing tray, both inside and outside angles, the safe way.
Model #04TB17SS

***BEND TRAY SAFELY
WITH OUR PATENTED
QUALITY ENGINEERED
TRAY BENDERS***



TUBING BUNDLE BENDERS

Designed to bend tube bundle, the safe way.

Model #01TBB17SS

Job made tools are being viewed with great interest by several groups:

OSHA

Project Safety Departments

Procurement Organizations

QA/QC Divisions

Insurance Companies

The hazards of job made tools are easy to understand: roughly made, meet no standards, engineering is non-existent, and liability for safety and quality is unlimited.

Most major construction firms refuse to allow job made tools on their job sites for just these reasons.

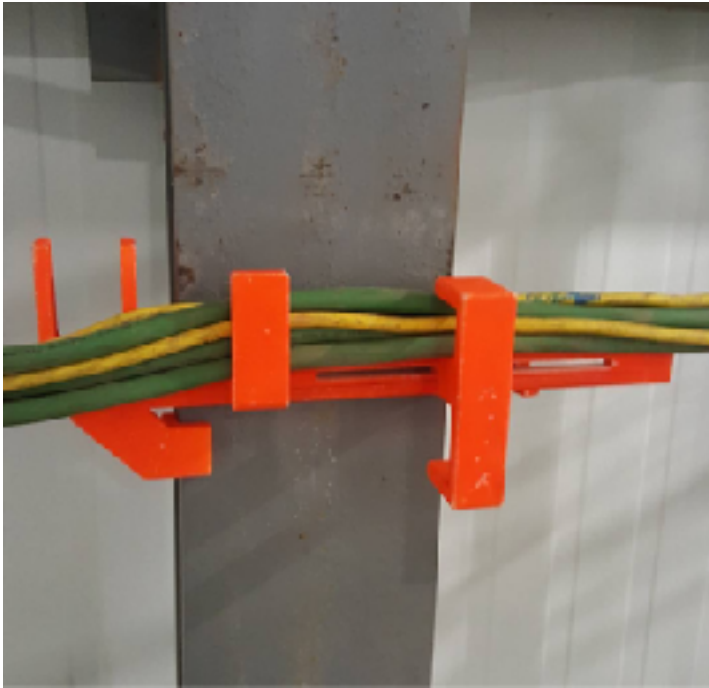
One of the more difficult jobs is the safe and accurate bending of instrument tubing and instrument trays.

Barker Support Systems is pleased to announce safe to use, easy to use, and engineered bundle and tray benders.

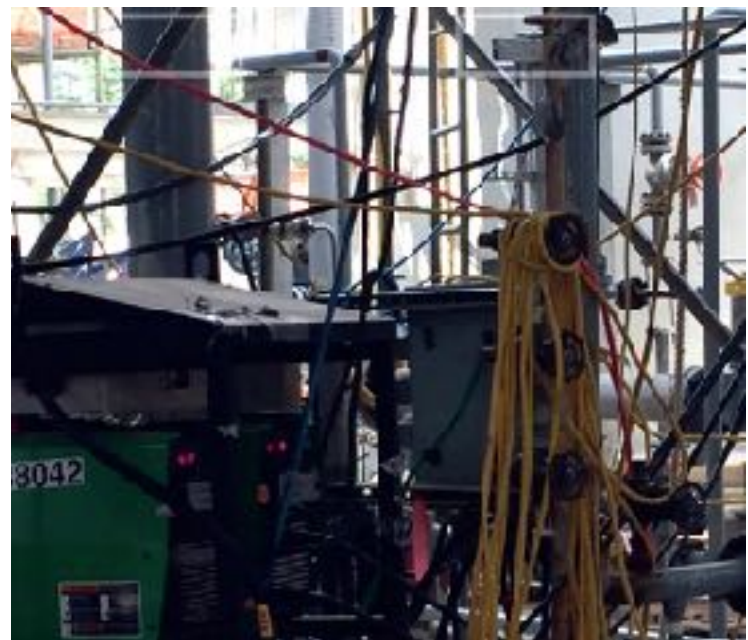


SAFETY CORD MANAGEMENT BRACKET

Affix directly to I-beams in three positions - overhead, horizontal and vertical. Fits flange size 4" to 12", supports beam thickness of 1 1/4" to 3 1/4" Model # SCM18Q
Model # SCM18R (12" to 24" Beams)



No more messy cords and leads, running over beams and in and around walkways. Improve your Industrial Hygiene with our Cord Management Bracket



SOLUTIONS TEAM



Have a problem with Safety, Quality, or Cost? We have the fix!! Let our team of experts handle it. With over 50 years combined experience in industrial construction. Let us find your solution today!

FOR ALL QUOTES AND PURCHASE INQUIRIES PLEASE
CONTACT US AT

310-347-9076 . thebarkerbracket@gmail.com
www.barkersupportsystems.com

4310 Ryan Street Suite 101 Lake Charles, LA 70631



Follow Us On Facebook For New Product Updates

